

GHF  
2025



Satellite Symposium

# CLIMATE CHANGE AND HEALTH: ADAPTATION AND RESILIENCE IN A CHANGING WORLD



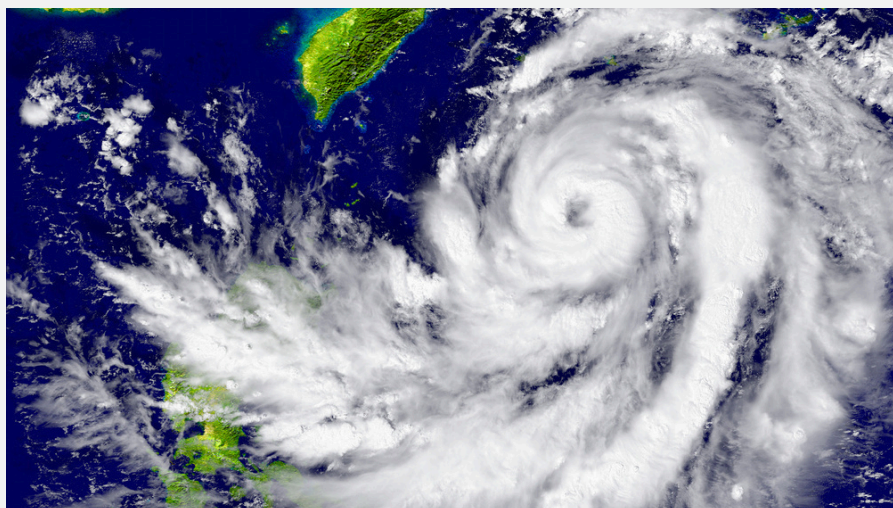
MAY 21, 2025

2pm - 3.30pm



## Overview

Climate change is not just an environmental crisis; it is a public health emergency. Rising temperatures, extreme weather events, and shifting disease patterns are placing unprecedented stress on health systems, disproportionately affecting vulnerable populations. Strengthening adaptation and resilience is now essential to safeguarding human well-being.



Through discussions balancing scientific rigor with real-world implementation, this session will explore **advanced meteorology modeling, effective early warning systems, health co-benefits of climate action, and strategies from emerging AI-driven health surveillance to community-based adaptation**—ensuring no population is left behind.

By fostering collaboration across organizations and regions, the symposium will provide a platform to integrate health into climate adaptation policies, offering tools to measure health outcomes in local contexts and achieve shared goals for a resilient future.

# Program

## 2.00 pm Opening

### *Opening Remarks*

**Margaret Chan** Founding Dean, Vanke School of Public Health, Tsinghua University; Emeritus Director-General, World Health Organization

### *Keynote Speech*

**María Neira** Director, Department of Environment, Climate Change and Health, World Health Organization

### *Context Setting*

**John S. Ji.** Associate Professor, Vanke School of Public Health, Tsinghua University

## 2.20 pm Panel 1 - What is in the moment ?

### *Moderator*

**Andy Haines** Professor, Department of Public Health, Environments and Society, London School of Hygiene and Tropical Medicine

### *Panelists*

**John S. Ji** Associate Professor, Vanke School of Public Health, Tsinghua University

**Jessica Kronstadt** Program Director, Planetary Health Alliance, Bloomberg School of Public Health, Johns Hopkins University

**Jian Zhou** Assistant Director, Institute of Energy, Environment and Economy, Tsinghua University

**Yoonhee Kim** Associate Professor, Department of Global Environmental Health, University of Tokyo

# Program

## 2.50 pm Panel 2 - How to go forward ?

*Moderator*

**Jocalyn Clark** International Editor, Head of Scholarly Comment, The BMJ

*Panelists*

**Cunrui Huang** Vice Dean, Professor, Vanke School of Public Health, Tsinghua University

**Vera Siesjö** Senior One Health Scientist, Asian Infrastructure Investment Bank

**Jian Zhang** Vice President, Institute of Climate Change and Sustainable Development, Tsinghua University

**Katherine Littler** Co-lead, Global Health Ethics & Governance Unit, World Health Organization

**Sandro Demaio** Director and Head, Asia-Pacific Centre for Environment and Health, World Health Organization Western Pacific Region

## 3.20 pm Q&A

## 3.25 pm Closing

*Summary and Closing Remarks*

**Cunrui Huang** Vice Dean, Professor, Vanke School of Public Health, Tsinghua University

## 3.30 pm Light Meal and Refreshments



## Guest speakers



**Margaret Chan**

*Emeritus Director-General*  
World Health Organization  
*Founding Dean*  
Vanke School of Public Health  
Tsinghua University



**María Neira**

*Director*  
Department of Environment, Climate Change and  
Health, World Health Organization



**John S. Ji**

*Associate Professor*  
Vanke School of Public Health  
Tsinghua University



**Andy Haines**

*Professor*  
Department of Public Health, Environments and  
Society  
London School of Hygiene and Tropical Medicine



**Jessica Kronstadt**

*Program Director*  
Planetary Health Alliance  
Bloomberg School of Public Health  
Johns Hopkins University

## Guest speakers



**Jian Zhou**

*Assistant Director,*  
Institute of Energy, Environment and Economy  
Tsinghua University



**Yoonhee Kim**

*Associate Professor*  
Department of Global Environmental Health  
University of Tokyo



**Jocalyn Clark**

*International Editor, Head of Scholarly  
Comment*  
The BMJ



**Cunrui Huang**

*Vice Dean, Professor*  
Vanke School of Public Health  
Tsinghua University

## Guest speakers



**Vera Siesjö**

*Senior One Health Scientist*

Asian Infrastructure Investment Bank (AIIB)



**Jian Zhang**

*Vice President, Institute of Climate Change and Sustainable Development*

Tsinghua University



**Katherine Littler**

*Co-lead, Global Health Ethics and Governance Unit*  
World Health Organization



**Sandro Demaio**

*Director and Head*

The Asia-Pacific Centre for Environment and Health, World Health Organization Western Pacific Region

# Practical information

## *Organizer*

**The Vanke School of Public Health at Tsinghua University**, established on April 2, 2020, is a strategic response to global health trends and national health demands. Emphasizing integration, internationalization, and excellence, the School leverages Tsinghua's multidisciplinary strengths to foster cross-disciplinary collaboration and innovative training models. It focuses on four core areas: public health security, holistic health, health big data, and health policy and management. With a primary focus on graduate education, the School aims to become a leading hub for talent cultivation, interdisciplinary innovation, policy support for “Healthy China,” and a model of global health governance.



Scan or [click](#) to get more information

## *Location*

Campus Biotech, 9 chemin des Mines, 1202 Geneva  
Room B1\_06

## *Accessibility*

Bus 1, 11, 25, stop Jardin Botanique

Tram 15, stop Maison de la Paix

Train CFF & CEVA, stop Sécheron

